



DOME TECHNOLOGY®

WOOD-PELLET OVERVIEW



MORE STORAGE, SMALLER FOOTPRINT

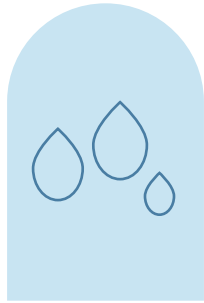
Store more product on a smaller piece of land than within a silo of comparable dimensions. A Dome-Silo can be filled to the top since it can support the pressure of product at all points of the structure.



Clockwise from top left: Drax Demopolis, Albioma Martinique, Barrette-Chapais, Drax England, Enviva Pasca-
goula

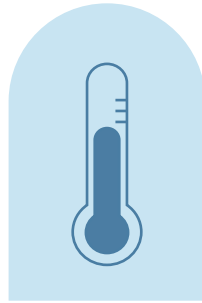
WOOD-PELLET PROTECTION

Keep moisture at bay by selecting a dome for your storage needs. Bonus: Our truss- and beam-free domes mean no dust buildup in the roof.



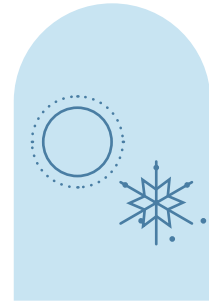
Keep product dry

Protect your product from moisture entrance with dome storage. The continuous PVC membrane on the exterior ensures complete waterproofing. No other silo option promises this level of waterproof protection.



Constant temperature

A dome's insulated nature prevents large temperature shifts inside. Product integrity is preserved since temperatures inside are consistent.



A sealed envelope

Thanks to the dome's reinforced-concrete construction and exterior PVC waterproofing membrane, product stored inside is completely confined with no chance of interaction with the environment.



INNOVATIVE CONCEPT

The materials we use are key. The combination of concrete, steel reinforcement, and nature's perfectly strong shape produces an undeniably robust DomeSilo.

A turnkey solution

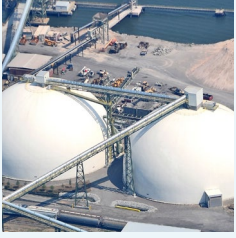
Select our team to provide the entire package. We invented the dome-construction process and can provide foundation options and mechanical systems, from equipment on the inbound side to reclaim systems. We typically employ a design-build method for the entire project, but we also offer support for specific portions of projects.

Covering all the bases

Personnel safety comes first. Dome Technology projects include round explosion panels, nitrogen systems, gas detection, fire-suppression systems, and aeration. By maximizing pellet protection, we keep your employees out of harm's way too.

PROJECT PORTFOLIO

The facility you need can be yours. Select Dome Technology for customized storage unique to what you do—it's what we've done in the 20-plus wood-pellet domes we've built since 2014.



PEEPLS INDUSTRIES
Georgia, USA
Two domes, 50,000 mt total
190 feet in diameter X 105 feet tall

ALBIOMA
Martinique
One dome, 19,900 mt
115 feet in diameter X 108 feet tall



DRAX
United Kingdom
Four domes, 320,000 mt total
207 feet in diameter X 172 feet tall

BARRETTE-CHAPAIS
Quebec, Canada
Two domes, 45,000 mt total
122 feet in diameter X 131 feet tall



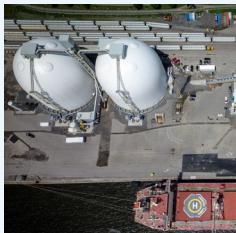
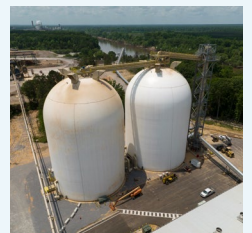
ENVIVA
Virginia, USA
Two domes, 90,000 mt total
175 feet in diameter X 157 feet tall

ENVIVA
Mississippi, USA
Two domes, 90,000 mt total
175 feet in diameter X 157 feet tall



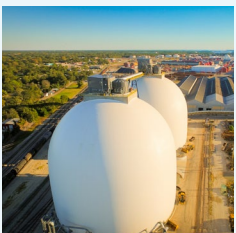
DRAX
Louisiana, USA
Two domes, 80,000 total
202 feet in diameter X 117 feet tall

DRAX
Alabama, USA
Two domes, 20,000 mt total
90 feet in diameter X 135 feet tall



QSL
Quebec, Canada
Two domes, 75,000 mt total
158 feet in diameter X 137 feet tall

PEEPLS INDUSTRIES
Georgia, USA
One dome, 30,000 mt
190 feet in diameter X 106 feet tall



ENVIVA
North Carolina, USA
Two domes, 90,000 mt total
170 feet in diameter X 160 feet tall

ALBIOMA
Reunion Island
Two domes, 19,000 cubic meters total
105 feet in diameter X 85 feet tall

